

# III Max Rehab

The Rolls Royce of balance platforms. Specially designed to assess functionality, mobility and motor control in everyday tasks, such as walking, climbing stairs and getting up and sitting down. Super sensitive and precise, with 16 assessment protocols.

## + 16 Balance Protocols Assessment

- > mCTSIB- Modified Clinical Test of Sensory Interaction on Balance
  - > Romberg Test
  - > Body Sway (posturography)
  - > LOS - Limits of Stability
  - > Fall Risk
  - > Rhythmic Weight Shift
  - > Unilateral Stance
  - > Balance Error Scoring System
  - > Unilateral Stance
  - > Sit to Stand
  - > Static Analysis
  - > Total Balance Pro
  - > Step Up Over
  - > Forward Lunge
  - > Weight Bearing Squat
- 
- > Postural Analysis
  - > Dynamic Analysis (gait)

## + 4 Balance Games

- > Several shapes, figures and games to balance practice

## + 30 Balance Exercises

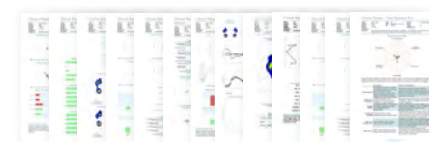


## Balance Software

Powerful Balance Assessment and Training tool



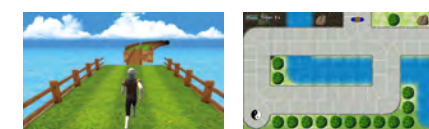
### + 14 assessment protocols



### + 30 balance exercises

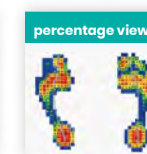
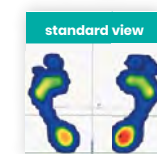
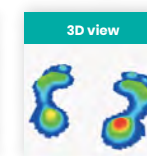
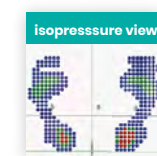


### + 4 balance games



## Podo Software

Get the foot pressure map of your patient and generate a static and dynamic baropodometric analysis



+ Static & Postural Analysis  
+ Dynamic Analysis



## TECHNICAL SPECIFICATIONS

Dimensions (Length x Width x Height)	160,5 x 46,9 x 1,8 cm
Weight	24 kg
Active sensor area	1463 x 325 mm
Sensor technology	resistive
Pressure range	1 - 127 N/cm <sup>2</sup>
Data acquisition frequency	100 Hz
Resolution	10 bits
Operating temperature range	+15 °C to +30 °C
Storage temperature range	+0 °C to +40 °C
Relative humidity	20% to 80% non-condensing
Connection to PC	USB

⊙ 7,62 x 5,08 mm each sensor ⊙ Baropodometric plate ⊙ 12 288 sensors

### PC minimum requirements

It is mandatory to have the minimum requirements to guarantee proper functioning of the system

#### Computer

Processor (CPU)	i3, Quad-Core, with 2GHz avoid Ultra Low Power "U" series of CPU
RAM	4 GB
USB Ports	2.0 or 3.0
Operating System	Windows 10 or 11



## III Max Rehab solution



### Composition:

- Long Pressure Plate
- Podo Software
- Balance Software

### Included accessories:

- Foam
- Step



### who

is this solution for?

- ✓ Physiotherapists
- ✓ Neurological physical rehabilitation professionals

### main applications

- Balance Assessment with 12 clinical reports
- Balance Training with biofeedback
- Stroke Rehab (and others neurological diseases)
- Fall Risk Assessment
- Feet Pressure Map
- Posturography
- Sit to Stand Study
- Gait Analysis
- Motor Control Assessment

Schedule a demo now

