

IX Kine-Sim

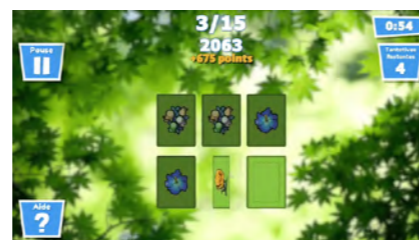
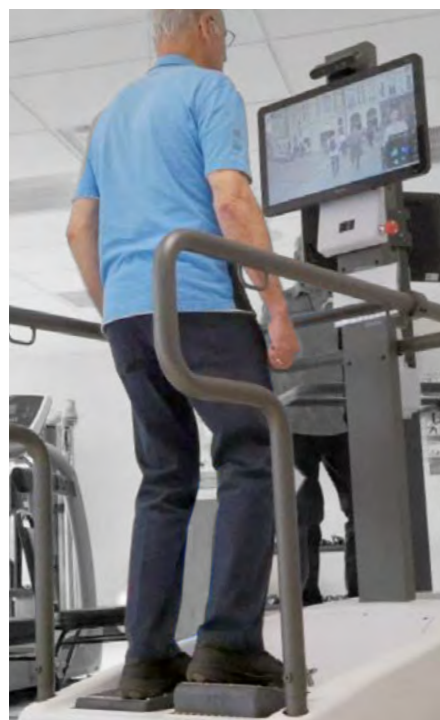
The first balance and cognitive motor-exercise equipment dedicated to physical and neurological rehabilitation and to autonomy preservation for the senior. With two motion platforms combined, perfectly synchronized with multimedia content for passive and assisted movements.

AN ENGAGING TOOL

With over 70 real life scenarios, patients are more engaged and satisfied with therapy, experiencing an improved overall quality of life.

Therapies

- > Balance Training
- > Posture Correction
- > Reaction
- > Motricity
- > Cognitive
- > Dual Task Training
- > KineStep (climbing stairs)

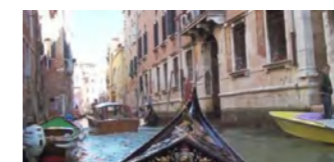
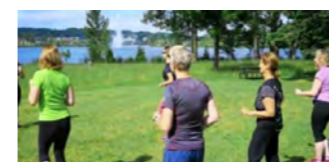


Intuitive hardware and software design allowing the operator to set the user up in as short as 1 minute.

Immersive Training

The dual independent dynamic platforms move in sync with the multimedia content playing on a monitor to simulate different scenarios in daily life, allowing the training to be interactive, immersive and fun.

- > Sports & Exercise
- > Unipodal Movement
- > Bipodal Movement
- > Transportation



IX Kine-Sim solution



Composition:
An unique integrated product

who
is this solution for?

- ✔ Senior living residences
- ✔ Neurological & Physical Rehabilitation Facilities

main applications

- Ageing
- Amputation
- CVA
- Spinal cord injuries
- Parkinson's disease
- Cerebral palsy
- Loss of autonomy
- Multiple sclerosis
- Musculoskeletal problems
- Cranial injuries
- Strokes
- Concussions

[Schedule a demo now](#)